

Broughton Village Information Session

Wednesday 19th February @ 7pm





Today's topics....

- Neighbourhood Plan Review: Rule 14 responses
- Central Lancashire Local Plan
- King Georges Field Plan and timeline
- Parking & speeding
- Blooming Broughton
- Village Easter Egg Hunt
- Village news
- Open Forum



Neighbourhood Plan Review

Rule 14 responses

Rule 14 consultation with external bodies such as United Utilities

- ☐ Due to the government changes in planning over the last 6 months changes are needed in the Design Code: Aecom Report
- ☐ The focus on flooding and ground water drainage has increased so changes are required to the “Suds & Swales”policies
- ☐ Ground water Protection Zones (GPZ) we have two!
- ☐ Heritage > Lancashire Archaeology Service



Timeline for BNDP

- ✓ Once changes made Rule 15 consultation with same bodies will be untaken, hopefully in April 2025
- ✓ With a view to having the completed review with the examiner by June
- ✓ Hopefully we will get to the referendum by the summer

Central Lancashire Local Plan

Preston City Council approved the next step on the 30th January. The plan goes out for consultation under Rule 19 regulations.

A copy of the plan and the appendices is available on the city Councils website. It covers the period 2023-2041.

Annual Housing Requirement for Preston is 520 (590) in the plan

Only **allocated site** in Broughton is on Whittingham Lane

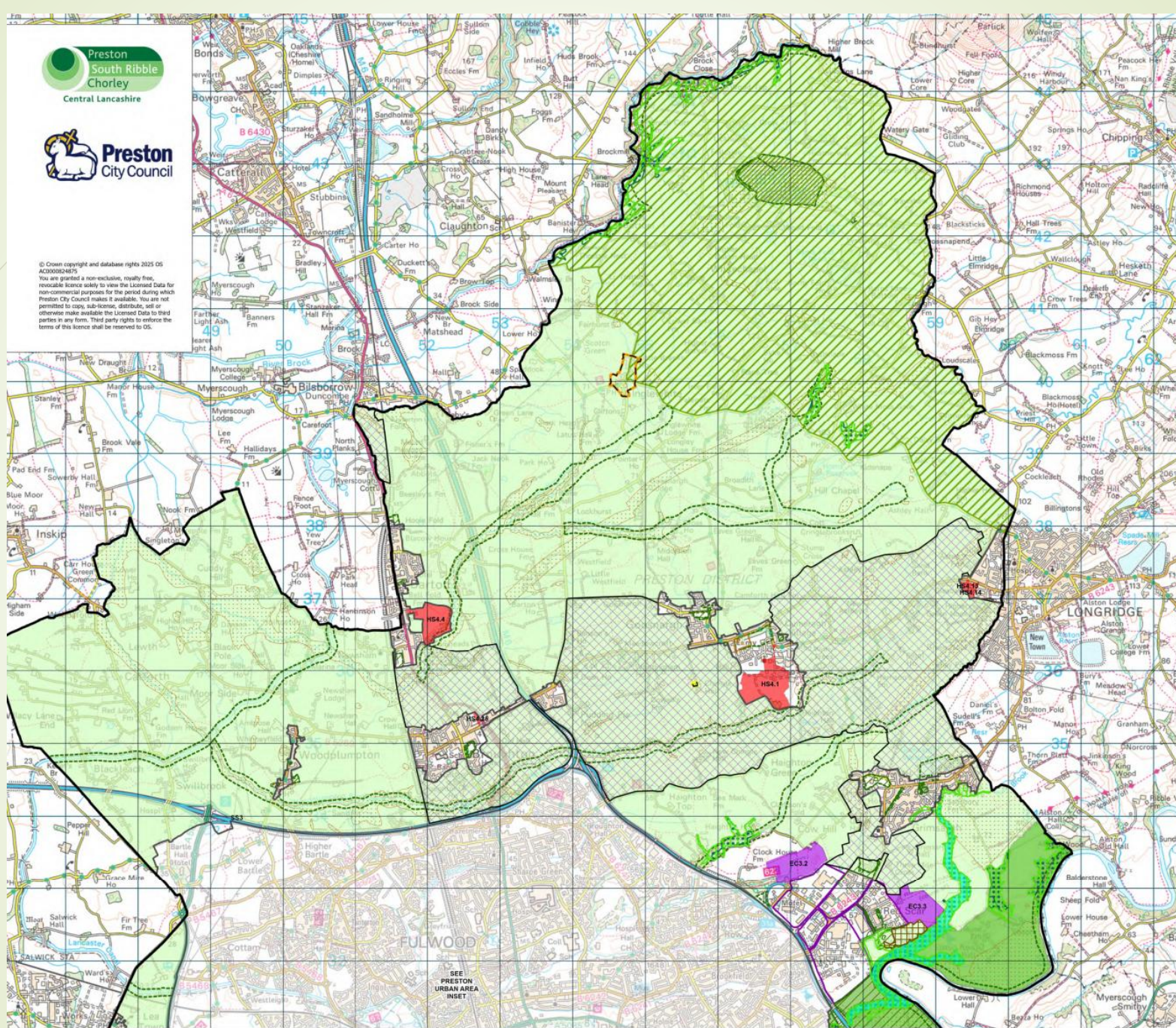


Preston
South Ribble
Chorley
Central Lancashire



Preston
City Council

© Crown copyright and database rights 2025 OS
AC000024875
You are granted a non-exclusive, royalty free,
revocable licence solely to view the Licensed Data for
non-commercial purposes for the period during which
Preston City Council makes it available. You are not
permitted to copy, sub-license, distribute, sell or
otherwise make available the Licensed Data to third
parties in any form. Third party rights to enforce the
terms of this licence shall be reserved to OS.





BNDP allocated site

► RES 1 Housing development outside the defined settlement boundary

(Land to the south of Broughton & District Club and to the west of James Towers Way)

► The above site will be subject to a masterplan which shall first be submitted and approved by Preston City Council, as the local planning authority. The masterplan **will/should** provide:

- Up to 160 dwellings
- Public space for a new park linked to King Georges Field
- Land to allow for the expansion of St John Baptist Church of England Primary School
- Community Allotments

► ICF 1 Community Facilities

► The following site will be allocated for community facilities :

(Land to the east of Broughton & District Club and the west of James Towers Way)

► Proposals for the above site **should/will/would provide/include** the following:

- Nursing Home
- Community building and community garden
- Nursery or pre-school



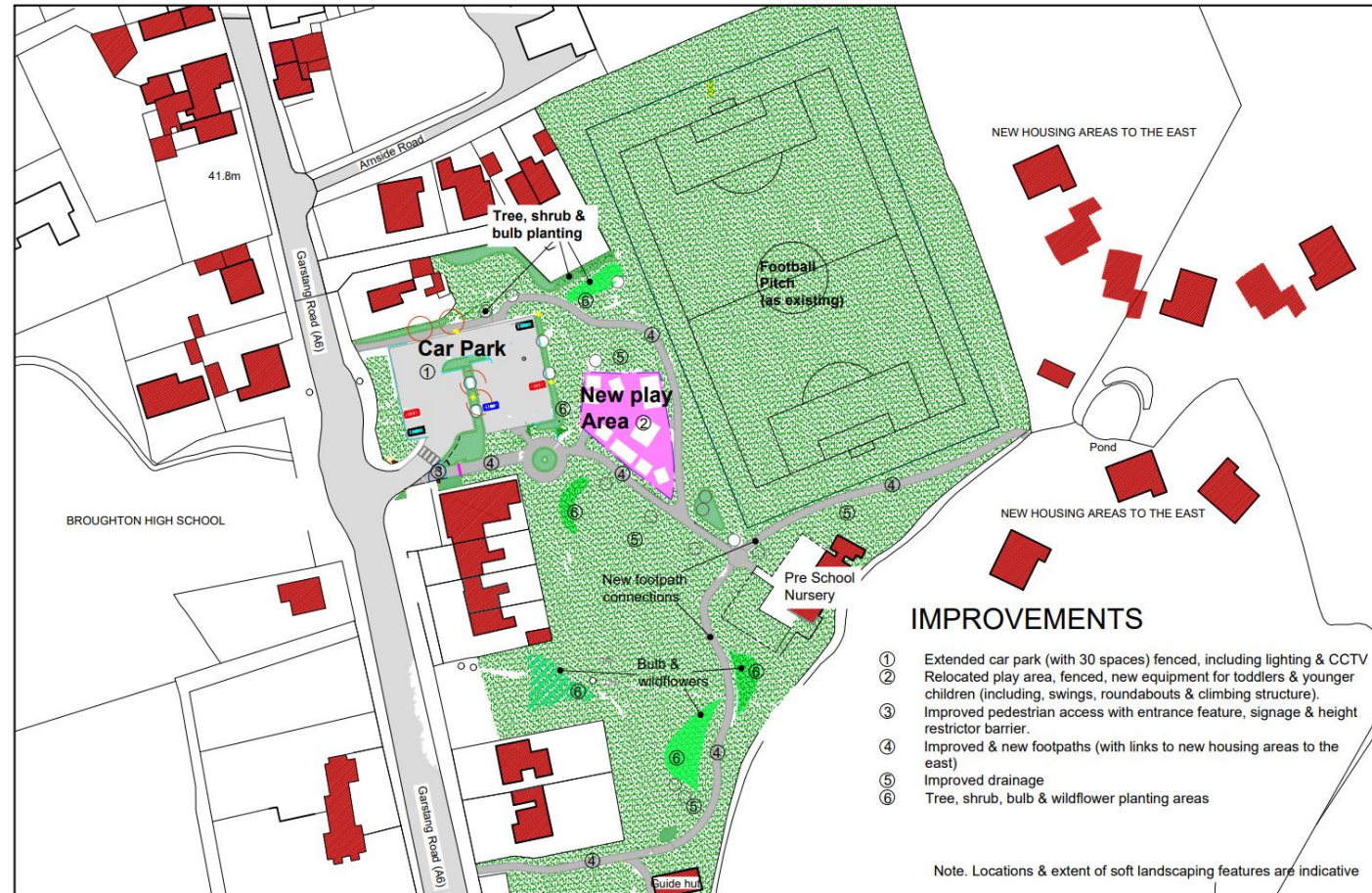




King Georges Field Plan & Timeline

- Guide hut: new path, fire exit and disabled access, completed CiL grant
- Football shower block: PCC completing external work then internal work CiL grant
- Playground: new play equipment but the pig is staying and will have a companion
- Drainage improved
- Car Park: extended, resurfaced, landscaped, lighting, CCTV
- Footpaths: re-established and linked to new park
- Seating: not only in the playground
- Wild flower meadow and tree planting (ENVIRO grant applied for)

King Georges Field



King George V playing field Broughton
PROPOSED SITE MASTERPLAN

Scale 1:1250 @ A4
Drawn M.K.A.
Section. Landscape Design

Date 11.06.2024
Dwg No L.KI.0387.030



Link though to the new park





BNDP = New Parish Action Plan

Key & new areas not discussed in this presentation:

Education

Link to South East Broughton

Post office

Flooding

Climate change and our environment

Copy on website & changes requested add



Speeding

Key areas for concern:

Garstang Road, Woodplumpton Lane, Whittingham Lane,
Dorton Lane

Spids:

Static Data: to LRSP

Speed guns: teams (now have four volunteers need more)

Report it: <https://lancsroadsafety.co.uk/speed-concern-options/>



Speed Concern Submission

If you're concerned about speeding in your area, we're here to help you report it easily and effectively.
Please choose from the options below.



Report Individuals/ Specific Vehicles



Request Traffic Calming Measures



Dashcam Footage

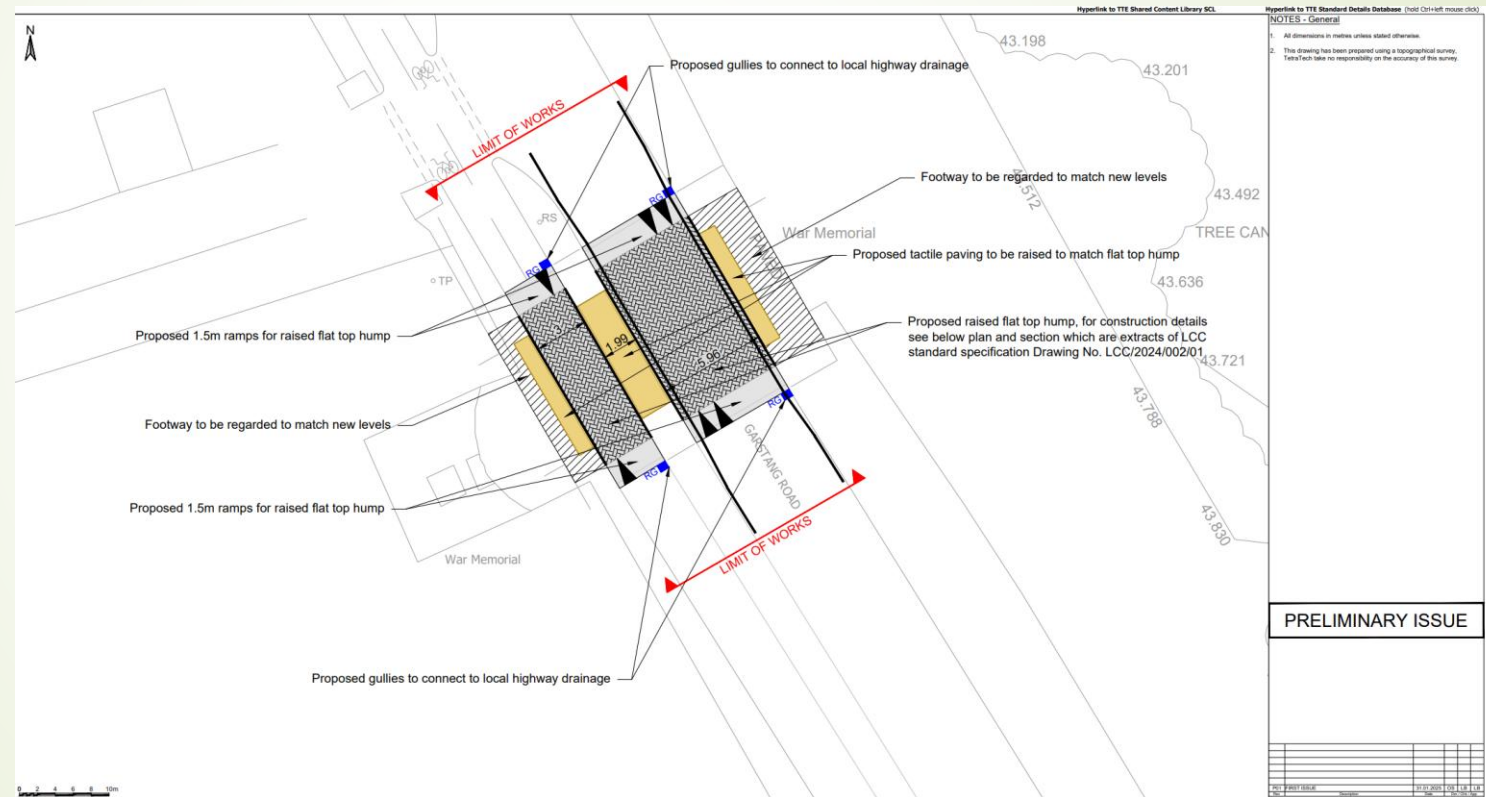


Check Existing Concerns



Report Regular Excess Speed

Speed reduction: Proposal put to LCC for the war memorial area





Parking issues

1) High school use of car park off Sandygate Lane
Sign required.

Yellow lines by Northway agreed but not yet done.
Teachers are acting as wardens after school.

2) Primary school:

3) Car park: KGV field already discussed

4) Street: Village no parking zone, yellow lines requested
for the Village Realm area.

Blooming Broughton Working Group

**1st meeting Monday 3rd
March @ 6.30 @ the Cottage**



Blooming Broughton Competition



[This Photo](#) by Unknown Author is licensed under [CC BY-SA](#)

Village Easter Egg Hunt & Family Fun Day!

Saturday 19th April 2025 at 11am – 2:00pm

Join us for some Easter fun, creativity, and sweet treats!

- 11am Village Easter Egg Hunt on King Georges Park, Garstang Road.
- 12pm Once you've found a plastic egg, head to the Toll Bar Cottage for a surprise!
- Once you've collected your prize, stick around for Easter Egg decorating, Games, Baking and more Crafts!

This event is free with donations welcome...
Any money raised will go towards the new outdoor area for one of our local Primary Schools

Generous donations have been made by Lidl and Booths





Village news



- The 45/46 Preston/Longridge/Ribchester/Blackburn bus route from the 30th March will be run by Vision in Partnership with LCC. They are promising new buses
- PROW's the Lengthsman is now working on them so if you are out walking and you see a problem please mail the clerk with the issue and if possible as photo
- The "Friend of the Guild Wheel" are planning "task-days" on sections of the guild wheel in Broughton details are on their facebook page
- Grant for Heritage fruit trees has been approved:- Red Windsor, James Greeve, Bramley Apple, Granny Smith, Charles Roos, Egermont Russet. They are to planted in the Pinfold & the Cottage Garden



Over to you...Open Forum

clerk@broughtonparishcouncil.org.uk

www.broughtonparishcouncil.org.uk

Next session 17th May @ 10.30 @ the Cottage

